



Armis Centrix™ for Vulnerability Prioritization and Remediation

Consolidate vulnerabilities, prioritize based on business risk, improve MTTR

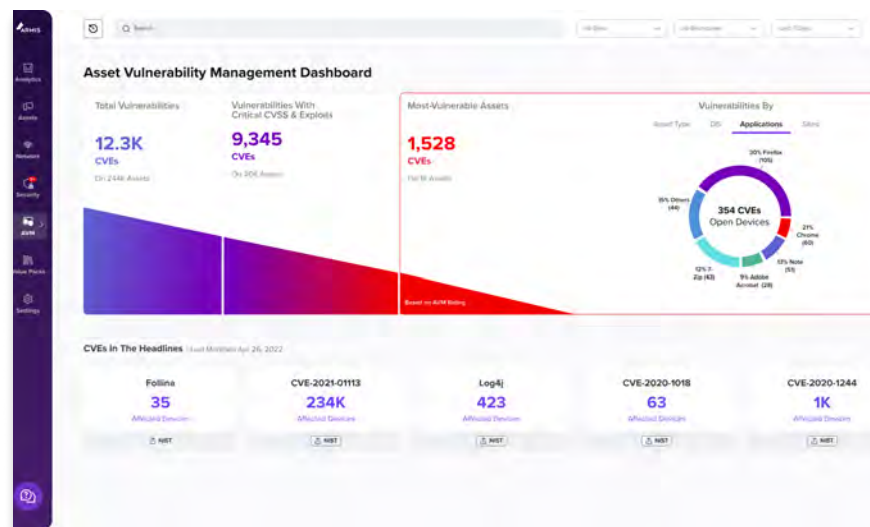
Consolidate all vulnerabilities and quickly remediate those vulnerabilities that are most likely to be exploited.

Organizations are overwhelmed by the sheer volume of vulnerable assets in their environment at any given moment. With every new asset deployed in support of growth, efficiency and innovation, the enterprise attack surface expands.

Armis Centrix™

Built on the asset discovery capabilities of Armis Centrix™, Vulnerability Prioritization and Remediation starts with a complete, unified view of every asset in your environment. This includes everything from your enterprise IT and network assets to cloud, IoT devices, OT devices like HMI panels, SCADA servers, and more.

The Armis Centrix™ platform combines vulnerability data from traditional scanners, EDRs and cloud vendors with Armis native network traffic analysis and Armis AI-driven Asset Intelligence Engine, which sees, secures, defends and manages billions of assets around the world in real time.



Vulnerability Prioritization and Remediation Critical Use Cases:

Fill in coverage gaps and consolidate vulnerabilities
Manually aggregating vulnerabilities from many different sources is a difficult and time consuming task. But with Armis, the consolidation is performed automatically for every asset in the environment.

Enrich with asset context and recommendations -
The Armis Asset Intelligence Engine adds risk scores, business criticality, and threat intelligence feeds, to provide a single pane of glass for organizational assets, their vulnerabilities, and their business impact.

Prioritize vulnerabilities - When your teams know exactly which critical assets are affected, by which vulnerabilities, they can act quickly and precisely to remediate the issues that pose the biggest threat to your business.

Remediate vulnerabilities

Integration with security automation and orchestration solutions enables automated responses to detected vulnerabilities. The Armis Centrix™ platform connects to your existing security tools to set remediation and mitigation actions.

Track Progress and manage process

Workflow integration with security and ticketing solutions help to reduce Mean Time To Resolution (MTTR) and manage the risk-reduction process.

Consolidate vulnerabilities, prioritize based on business risk, improve MTTR with Armis Centrix™ for Vulnerability Prioritization and Remediation.

Visit [Armis.com](https://armis.com) to find out more



Key features that make Armis Centrix™ the go to platform for Vulnerability Prioritization and Remediation

Consolidates baseline of all vulnerabilities, including their associated assets.

Armis passive assessment that detects vulnerabilities against full asset inventory.

Eliminate inefficiencies in scanner overlap or unnecessary agented asset scans.

Assign asset context to every vulnerability.

Combine real-world threat intelligence and analytics with your own business landscape

Save vulnerability teams the time of manually searching for and exporting information from multiple sources.

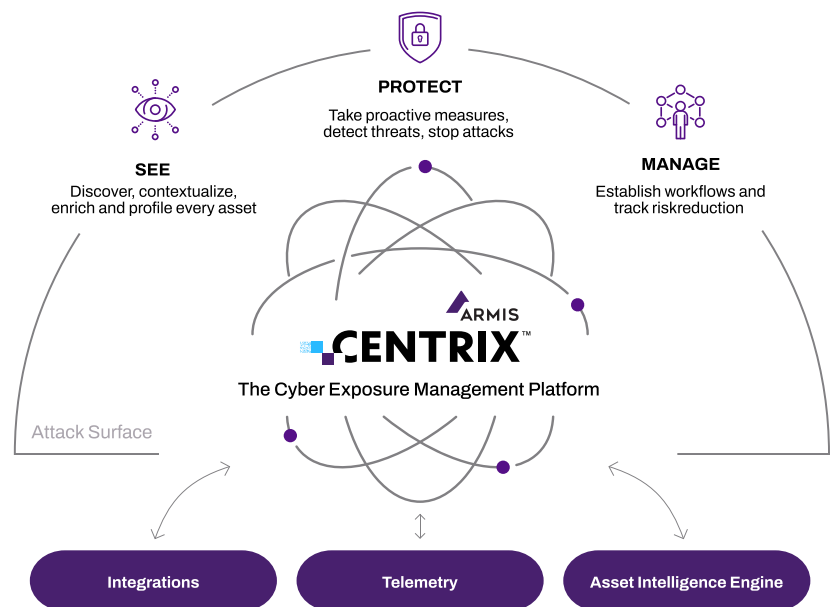
Drill down to a manageable amount of critically vulnerable assets and what you need to do about them.

Connect to your existing tools and workflows - Improve MTTR.

Easily track and demonstrate progress on exposure reduction.

Why more businesses are trusting Armis to deliver better outcomes

- 1 ROI** with a consolidated view of all vulnerabilities, eliminating overlaps and unnecessary scans.
- 2 Cyber resilience** with a clear focus on the vulnerabilities that pose the greatest risk to the business.
- 3 Improved MTTR** with end-to-end remediation workflows.
- 4 Greater efficiency** thanks to integrations and automated responses.



Consolidate vulnerabilities, prioritize based on business risk, improve MTTR with Armis Centrix™ for Vulnerability Prioritization and Remediation.

Visit [Armis.com](https://armis.com) to find out more